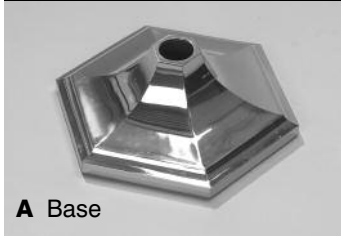


PARTS



A Base



C Shaft
(bottom end, with bolt)



B Top

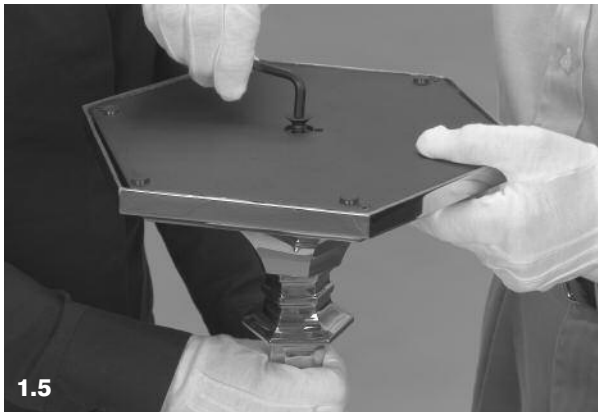
ASSEMBLY



1.1, 1.2



1.4



1.5



2.2

Almy Brass Floor-Standing Sanctuary Appointments

ASSEMBLY INSTRUCTIONS

Thank you for purchasing this fine floor-standing brass sanctuary appointment. To save you the great expense of shipping an assembled stand, we have delivered this appointment in easy-to-assemble parts. Follow these simple instructions to assemble your stand.

Parts

- A BASE** One of four styles in a choice of sizes. Our 10" Avon style is shown.
- B TOP** A 3 Light or 7 Light candelabrum (shown); a Paschal candle holder; an Advent or Marriage candelabrum; a Sanctuary Lamp; a Vase platform; or a Censer-Chime holder.
- C SHAFT** One of three styles in a choice of 38", 46" or 56" lengths. 46" Avon style shown. The bottom end of the shaft which fits in the base, has a 1" long bolt with an Allen wrench socket.

INSTRUCTION KIT Includes an Almy Mouse Pad, an Allen wrench, cotton gloves and this instruction sheet.

OPTIONAL PARTS Globe-Chimney for Sanctuary Lamps; Candle Sockets for candlesticks or candelabra.

Assembly: This is most easily done by two people.

1 Attach Base to Shaft Bottom

- 1.1** Place the mouse pad on the floor and put on the cotton gloves. The pad will protect the top of the shaft, and the gloves will protect the tarnish resistant lacquer from salt and other compounds on your skin.
- 1.2** Hold the shaft vertical, bottom (with bolt) up, and top down on mouse pad.
- 1.3** Using the Allen wrench, remove the bolt from the bottoms-up end of the shaft.
- 1.4** Place the base onto the stud at the bottoms-up end of the shaft. If the shaft is hexagonal, align the facets of the base with those of the shaft.
- 1.5** Use the Allen wrench to screw the bolt through the hole in the center of the base into the bottoms-up end of the shaft. Tighten clockwise until snug.

2 Attach Top to Shaft

- 2.1** Turn the shaft top-up. You'll see that the node in the top of the shaft conceals a threaded stud.
- 2.2** Carefully place the Top into the node and turn clockwise until reasonably tight and is properly aligned with the shaft and base.

3 Optional Items

3.1 SOCKETS FOR CANDLEHOLDERS

If you have ordered candle sockets, simply screw them clockwise onto the fixed threaded studs that are in place on any candlestick or candelabrum top.



- 3.2 GLASS CHIMNEY FOR SANCTUARY/ETERNAL LIGHT LAMPS** Carefully slip the glass chimney provided into the lamp top.

Move your appointment to its place in your sanctuary. You have assembled and installed an heirloom-quality appointment that will grace your church for years to come.



THREE AMERICAN LANE GREENWICH, CT 06831

800.225.2569 www.almy.com



AIK300-1

AS300-1