

Almy Brass Processional Torch-Pavement Light Appointments

ASSEMBLY INSTRUCTIONS

Thank you for purchasing this fine floor-standing brass sanctuary appointment. To save you the great expense of shipping an assembled stand, we have delivered this appointment in easy-to-assemble parts. Follow these simple instructions to assemble your stand.

Parts

A BASE Madison 11" Hexagonal Footed Cast Base

B TOP Processional Torch Top

C SHAFT Madison 2" Hexagonal Shaft 38" long

INSTRUCTION KIT Includes an Almy Mouse Pad, an Allen wrench, cotton gloves and this instruction sheet.

OPTIONAL PARTS Glass Chimney or Candle Socket

Assembly: This is most easily done by two people.

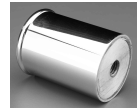
1 Attach Base to Shaft Bottom

- 1.1 Place the mouse pad on the floor and put on the cotton gloves. The pad will protect the top of the shaft, and the gloves will protect the tarnish resistant lacquer from salt and other compounds on your skin.
- 1.2 Hold the shaft vertical, bottom (with bolt) up, and top down on mouse pad.
- 1.3 Using the Allen wrench, remove the bolt from the bottoms-up end of the shaft.
- 1.4 Place the base onto the stud at the bottoms-up end of the shaft. Align the facets of the base with those of the shaft.
- 1.5 Use the Allen wrench to screw the bolt through the hole in the center of the base into the bottoms-up end of the shaft. Tighten clockwise until snug.

2 Attach Top to Shaft

- 2.1 Turn the shaft top-up. You'll see a deep socket to hold the processional torch handle.
- 2.2 Carefully place the Processional Torch Handle into the node socket gently lowering it into position until it is fully seated.

3 Optional Items



3.1 SOCKETS FOR CANDLEHOLDERS If you have ordered candle sockets, simply screw them clockwise onto the fixed threaded studs that are in place on any candlestick or candelabrum top.

3.2 GLASS CHIMNEY Loosen the three brass thumb screws on the torch's chimney holder. Carefully set the chimney in place and gently tighten the thumb screws to secure the chimney.

You have assembled and installed an heirloom-quality appointment that will grace your church for years to come.



THREE AMERICAN LANE GREENWICH, CT 06831

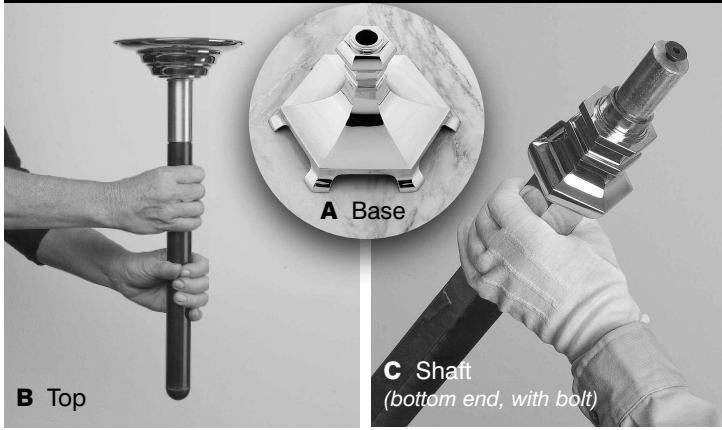
800.225.2569 www.almy.com



AIK315-1

AS315-1

PARTS



ASSEMBLY

